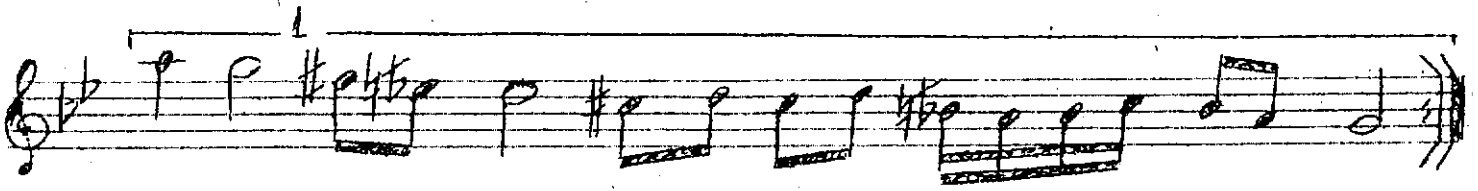
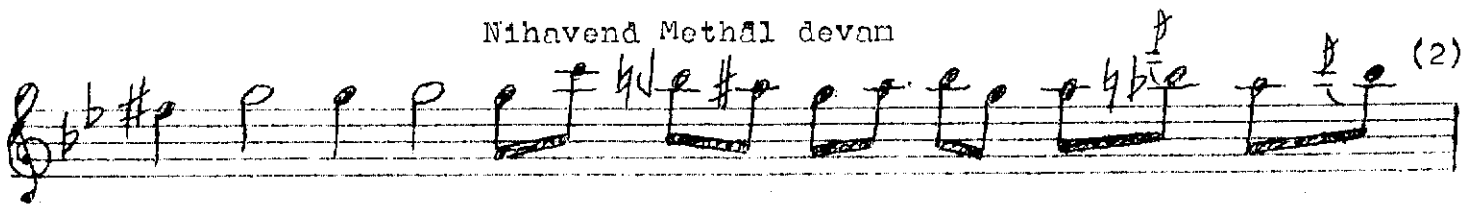


Usulü; Frençin (1)

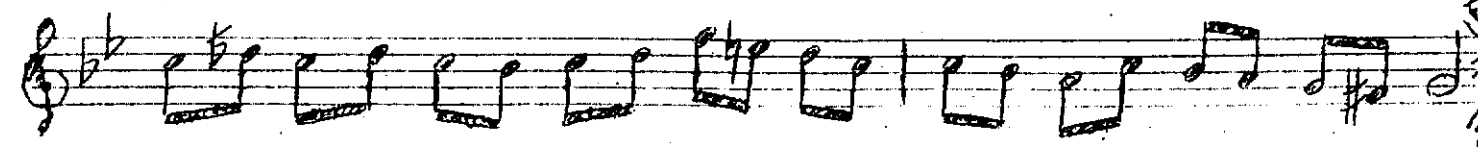
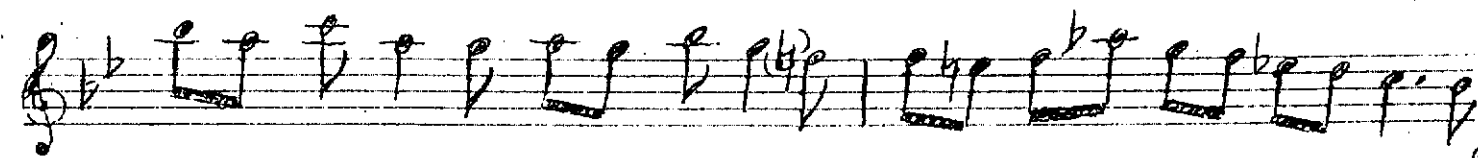
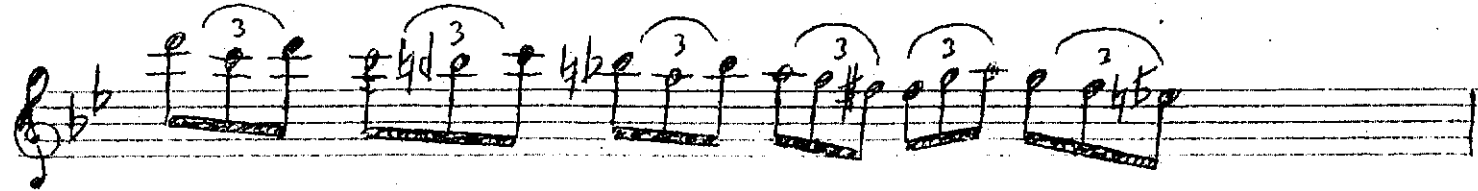
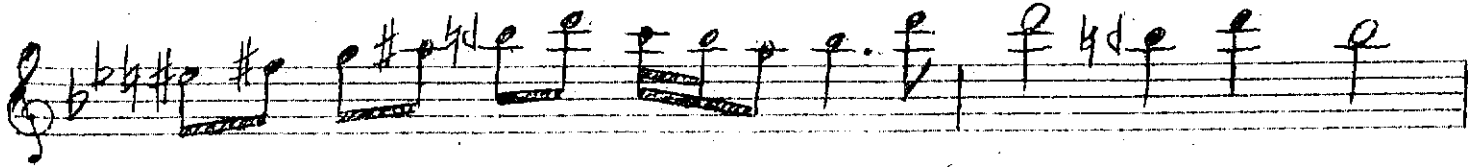
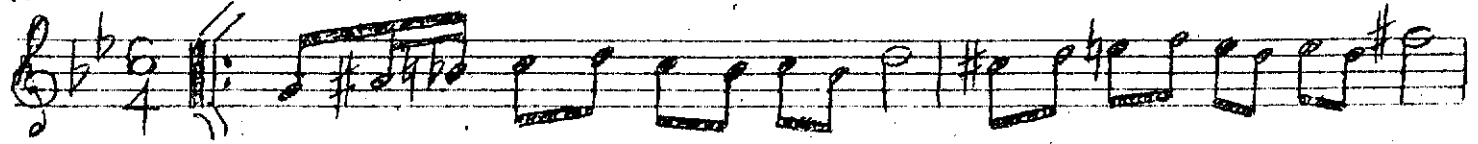
Handwritten musical score for the first section of the song 'Usulü; Frençin (1)'. The score is written on nine staves. The first staff begins with a treble clef, a key signature of two flats (B-flat and E-flat), and a 12/4 time signature. The music consists of various notes, rests, and triplets. The first staff has a 4(2) marking below it. The music ends with a double bar line and the word '(Son)' in parentheses.

(2 inci Bölüm)

Handwritten musical score for the second section of the song 'Usulü; Frençin (1)'. The score is written on two staves. The first staff begins with a treble clef, a key signature of two flats (B-flat and E-flat), and a 12/4 time signature. The music consists of various notes, rests, and triplets. The first staff has a 4(2) marking below it. The music ends with a double bar line.



(3 üncü ve son bölün)



Frenkçin 12  
Usûlü: 4

Düm düm düm düm te ke te ke te ke